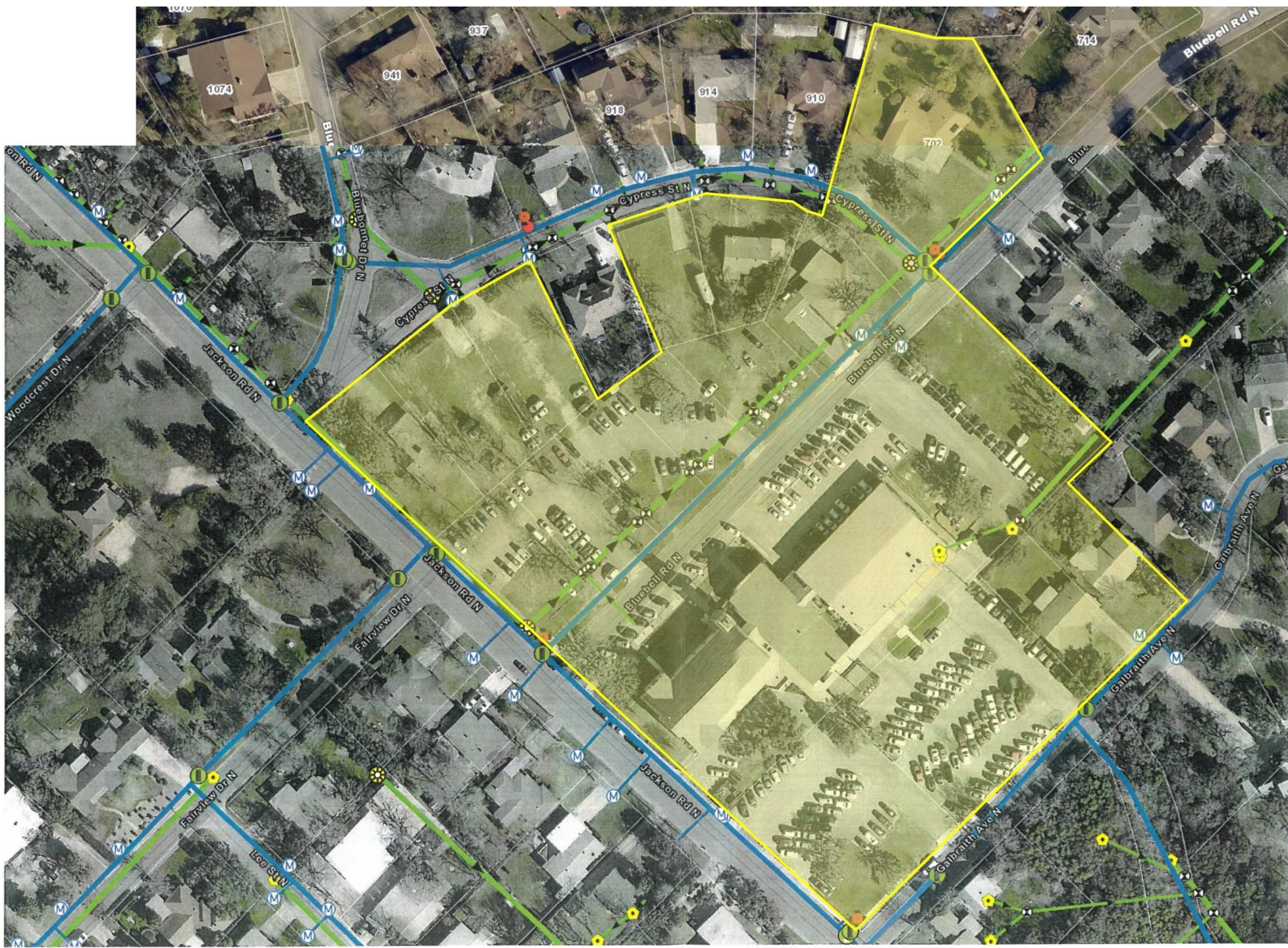


Long Range Planning Task Force Recommendation

Trinity Baptist Church – Kerrville, TX

4:00 PM, July 15, 2018



LONG RANGE PLANNING TASK FORCE

Guy Overby, Chair
Donna Hinton
Bennett Woodruff
Becky Watkins
Bitsy Martin
Larry Keese
John Wheat, Pastor
Clint Brown, B.A.

- In response to member request your Church Council reported in June of 2017 it was seeking out a task force to address long range plans for Trinity. Task force members would come from the Nominating Committee to the church for approval.
- During the October 22 Family Gathering/Business Meeting recommendations were given to and approved by members for task force members.
- The task force was charged with bringing a recommendation to members concerning plans to address Trinity's facility needs for the following 5 to 10 years.

LONG RANGE PLANNING TASK FORCE

Guy Overby, Chair
Donna Hinton
Bennett Woodruff
Becky Watkins
Bitsy Martin
Larry Keese
John Wheat, Pastor
Clint Brown, B.A.

- The task force began meeting on November 5, 2017.
- In February 2018 a church-wide survey was published to members.
- Survey results were analyzed and a report was given to members in March in two meetings.
- During this process the task force met with ministerial staff and others in preparation for the survey and their report.
- Discussion with the City of Kerrville concerning Bluebell Road is continuing to be explored.

TONIGHT'S DESIRED OUTCOME

Affirmative church
action to begin the
Discovery phase for
meeting facility
needs

Parts of Tonight's Meeting:

- Introduce you to desired vendor and process to employ
- Report the projected scope of project
- Communicate expected timeline
- Present motion
- Open for questions and discussion
- Vote on motion

AREAS OF NEED

As a result of prayer, meetings with staff, and the church-wide survey the task force identified several areas of need.

- Adequate and secure space for 7th – 12th grade students.
- Secure and unified space for ministerial and support staff.
- Gathering/foyer space
- Adequate and secure space for school age children
- Signage
- Enhance community engagement

GUIDANCE SOUGHT

Guidance for a good start and efficient potential project was sought from professionals.

- A spectrum of professionals were consulted concerning the process for and completion of a project to address our needs.
- Meetings between the task force and professionals were conducted in person and via conference call.
- Phases of the process include Discovery, Design, and Construction.
- During the discussion potential vendors for moving forward weight was given to
 - Specialization
 - Experience
 - Potential use of local trades

RECOMMENDED VENDOR



<http://churchesbydaniels.com/>

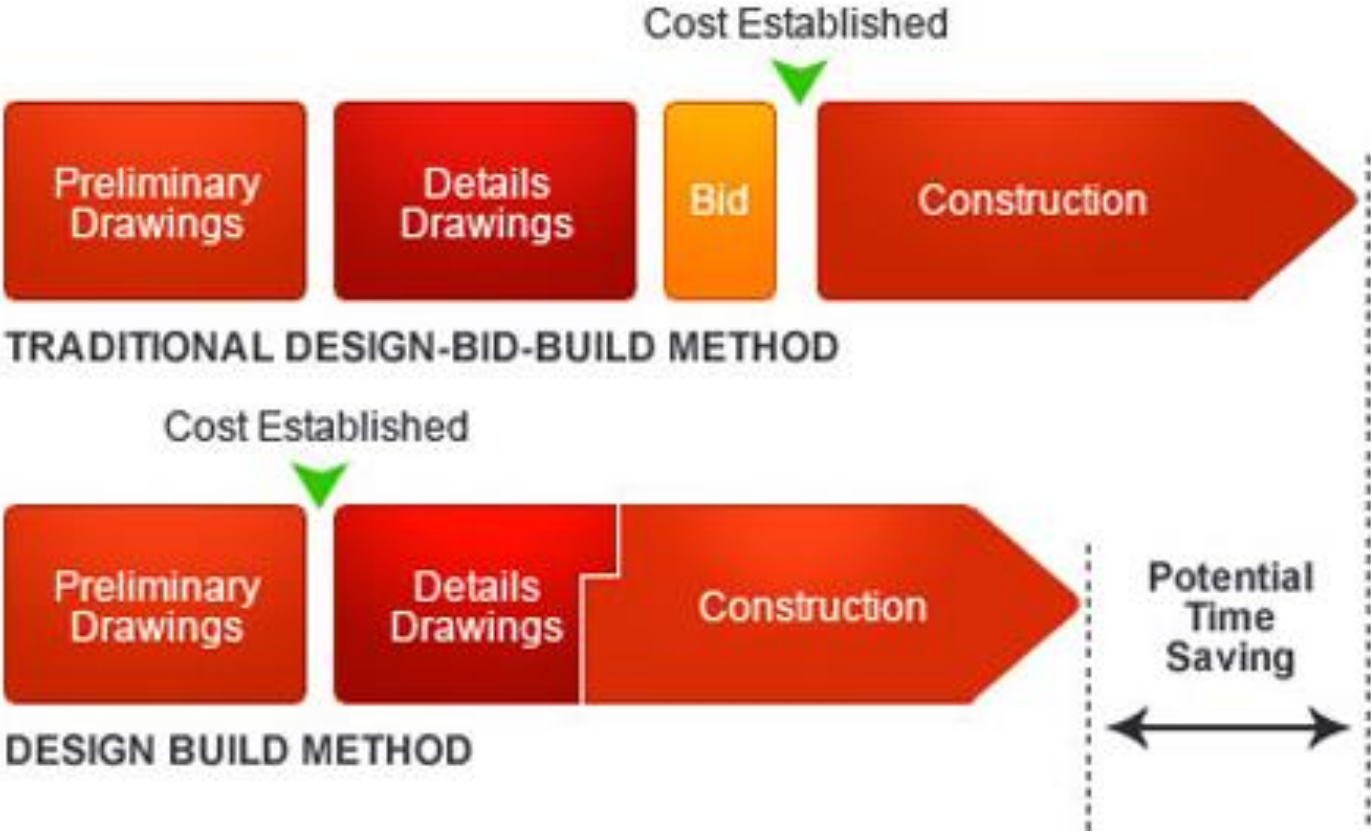
Broken Arrow, Oklahoma

38 Years Building Churches

Design Build Process
"Single Responsibility"

**Architecture,
Engineering and
Construction under one
contract.**

DESIGN BUILD PROCESS



PROJECTED SCOPE

New construction
and repurposing
and renovation of
existing facilities

- Study current facility use and repurpose and renovate identified areas better suited for current ministry flow.
- Provide new facilities needed to house ministries.
- Potential \$3-4 million project

TIMELINE

The design build process through Churches by Daniels.

Discovery Phase 10 -12 weeks (\$40k)

- Further investigation with members and staff
- Engage civil engineer
- Explore options for current church facilities.
- Conceptual drawings predesign documentation
- Total project cost (includes estimated construction fee)
- Option to continue with member approval along following timeline
- Preliminary drawings

TIMELINE

The design build process through Churches by Daniels.

3-4 month design phase (5.5% - 6.5% architect fee)

- Construction/architect [detail] drawings
- Permits
- Engage local trades and workforce

12-14 month construction

- Potentially begin construction 1st quarter 2019

TONIGHT'S MOTION

As a part of fulfilling the task force's charge the following motion is made to Trinity members.

The Long Range Planning Task Force moves that Trinity engage Churches by Daniels of Broken Arrow, OK to assist in the discovery phase of a project to meet facility needs of ministry at Trinity. This fee of \$35,000 plus the cost of a local civil engineer to be paid from the 20205 Building Fund designated account.

QUESTIONS & DISCUSSION
